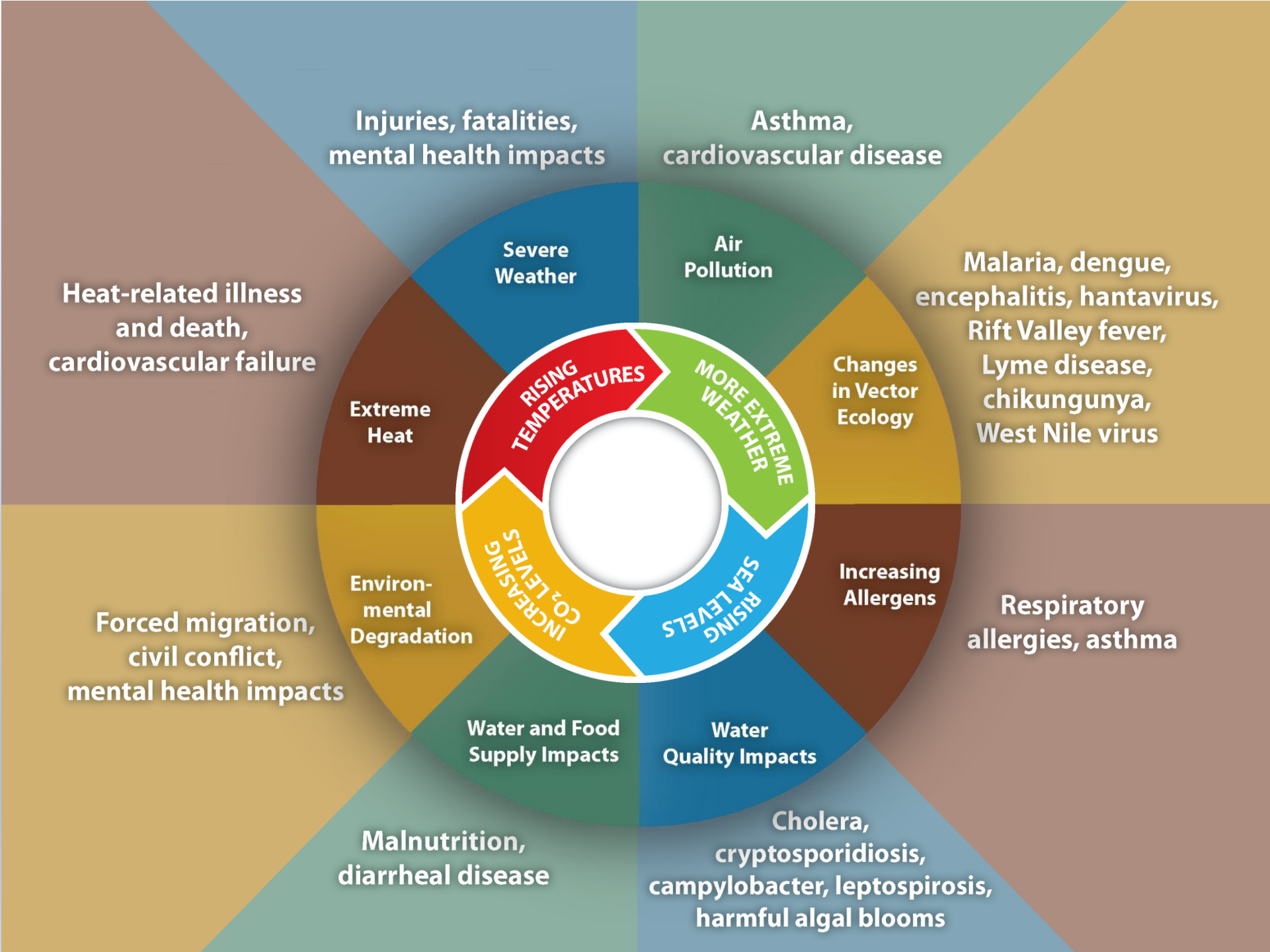




COMPLEXIDADE



**Injuries, fatalities,
mental health impacts**

**Asthma,
cardiovascular disease**

**Malaria, dengue,
encephalitis, hantavirus,
Rift Valley fever,
Lyme disease,
chikungunya,
West Nile virus**

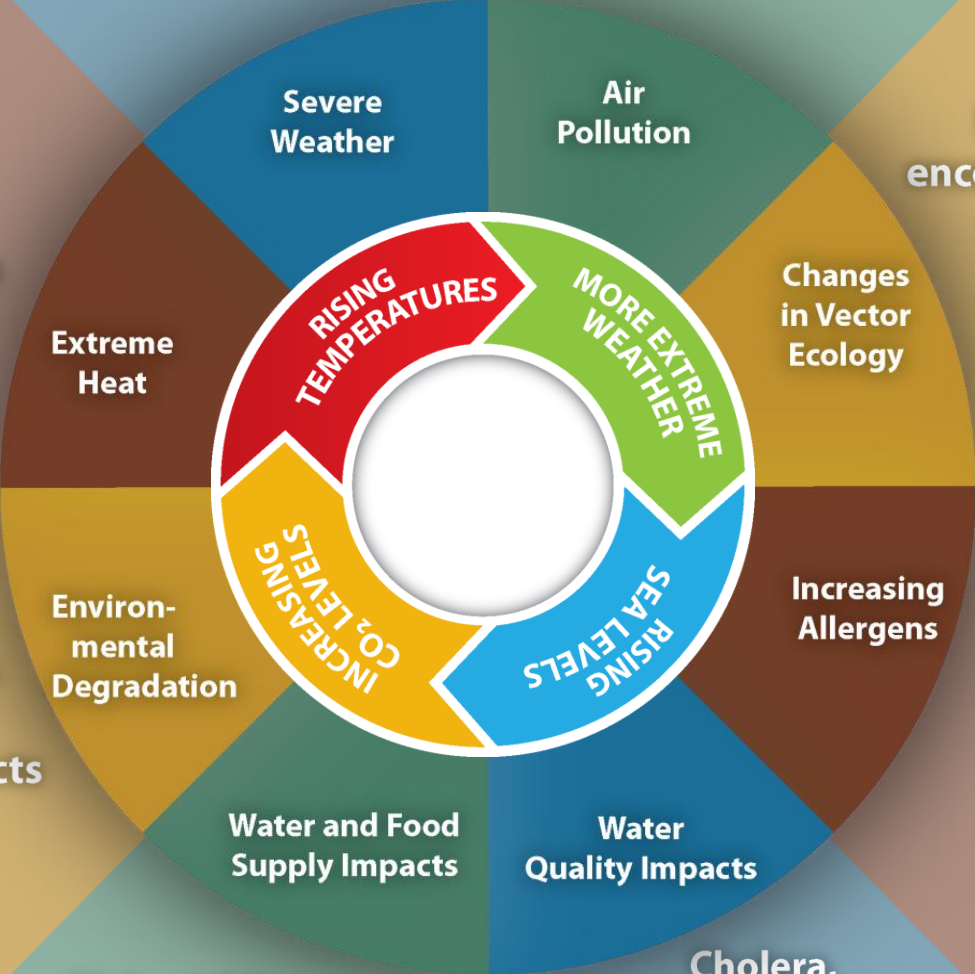
**Respiratory
allergies, asthma**

**Cholera,
cryptosporidiosis,
campylobacter, leptospirosis,
harmful algal blooms**

**Malnutrition,
diarrheal disease**

**Heat-related illness
and death,
cardiovascular failure**

**Forced migration,
civil conflict,
mental health impacts**



SUSTENTABILIDADE

5Ps Transformacionais



GRUPO 1: DESENVOLVIMENTO SOCIAL



GRUPO 3: AMBIENTE



GRUPO 2: DESENVOLVIMENTO ECONÔMICO



PARCERIA



PAZ